



NUS CHUA THIAN POH  
COMMUNITY LEADERSHIP CENTRE

---

SYMPOSIUM 2023

30 SEPTEMBER  
9.00AM TO 1.00PM

---

CHALLENGES OF AN  
**AGEING**  
**POPULATION**  
IN SINGAPORE



*With Guest-of-honour*



**Mr Tan Kiat How**

Senior Minister of State for  
Ministry of Communications & Information, and  
Ministry of National Development, &  
Adviser to East Coast GRC Grassroots Organisations

*and Thought Leaders*



**Dr Chua Thian Poh**

Board Member, Chua Foundation  
Executive Chairman, Ho Bee Land Limited



**Ms Chua Weiling**

Director of Philanthropy, Chua Foundation  
Chief Executive Officer, One Hill Capital Pte Ltd



**Prof Bernard Tan**

Senior Vice Provost  
(Undergraduate Education), NUS



**A/Prof Chng Huang Hoon**

Director, Chua Thian Poh Community  
Leadership Centre

# PROGRAMME

| Time    | Activity  |
|---------|---|
| 8.15am  | Registration  |
| 8.50am  | <b>All guests to be seated</b><br>Welcome & housekeeping matters by emcee Ms Cheong Ming Fang   |
| 8.55am  | Arrival of Guest of Honour  |
| 9.00am  | <b>Director's Welcome</b><br>by Assoc Prof Chng Huang Hoon, Director, Chua Tian Poh Community Leadership Centre, National University of Singapore   |
| 9.05am  | <b>Opening Remarks</b><br>by Mr Tan Kiat How, Senior Minister of State for Ministry of Communications & Information, and Ministry of National Development, & Adviser to East Coast GRC Grassroots Organisations   |
| 9.15am  | <b>Presentation of CTPCLC Graduates</b><br>Group photo with SMS Tan, Dr Chua Tian Poh, Ms Chua Weiling, Prof Bernard Tan and Assoc Prof Chng Huang Hoon   |
| 9.30am  | <b>Project Showcase: Reimagining the Active Ageing Centres of Thye Hua Kwan</b><br>by Charmaine Song Xinling & Tong Hui Yi  |
| 10.10am | <b>Panel Discussion "Challenges of an Ageing Population in Singapore"</b><br><br>Panellists:<br>Assoc Prof (Dr) Kenny Tan (CEO, St Luke's ElderCare Ltd)<br>Mr Chern Siang Jye (Group Chief, Sector and Partnerships Division, Agency for Integrated Care)<br>Assoc Prof Thang Leng Leng (Department of Japanese Studies, Co-Director of the Next Age Institute, Faculty of Arts and Social Sciences, NUS)<br><br>Moderator: Ms Sim Rou Chen (Chief Operations Officer, WeHiro) |
| 11.30am | End of Panel Discussion   |
| 11.35am | Poster Display, Demos & Lunch Reception @ Level 2, CREATE Tower   |
| 1.00pm  | Thank you and see you again   |

# CONGRATULATIONS TO 2023 CTPCLC GRADUATES

## Minor Degree in Community Development & Leadership

**Benedict Koh Cheng Rong**

Faculty of Arts and Social Sciences, Social Work (Hons)

**Lam Wei En**

Faculty of Arts and Social Sciences, Social Work (Hons)

**Lee De En Ethan**

Faculty of Arts and Social Sciences, Social Work (Hons)

**Lim Zhan Yang**

Faculty of Arts and Social Sciences, Political Science (Hons)

**John Low Zhi Hao**

Faculty of Arts and Social Sciences, Social Work (Hons)

**Nur Farhana Bte Mazeli**

Faculty of Arts and Social Sciences, Economics (Hons)

**Seow Hui Qin**

Faculty of Arts and Social Sciences, Psychology (Hons)

**Sin Mun Kay, Emily**

Faculty of Arts and Social Sciences, Social Work (Hons)

**Tan Wei Zhong Caleb**

Faculty of Arts and Social Sciences, Sociology (Hons)

**Tay Kai Yun Kaitlyn**

Faculty of Arts and Social Sciences, Social Work (Hons)

**Toh Rui Jie Rachel**

Faculty of Arts and Social Sciences, Social Work (Hons)

## Certificate in Community Development & Leadership

**Cheyenne Chang Rui Xue**

Faculty of Arts and Social Sciences, Political Science (Hons)

**Choi Tze Chun**

Faculty of Arts and Social Sciences, Political Science (Hons)

**Goh Wei Kiat**

School of Computing, Computer Science (Hons)

**Kho Yong Xiang**

Faculty of Arts and Social Sciences, Comms & New Media (Hons)

**Nur Haziqah Bte Mohd Yazib**

Faculty of Arts and Social Sciences, Psychology (Hons)



# REIMAGINING THE ACTIVE AGEING CENTRES OF THYE HUA KWAN (THK)

This exploratory study aims to uncover the expectations and hopes of Ang Mo Kio senior residents in Singapore regarding new Active Ageing Centres (AACs) in their neighbourhood. This project serves to help THK to better understand what are the motivating factors, values and sense of fulfilment, including the barriers faced by the senior residents accessing the centre. Recommendations are proposed for more outreach and opportunities for social interaction to benefit the seniors.

## Organisational Partner:

Thye Hua Kwan Moral Charities Limited

## Project Supervisor:

Dr Kevin S.Y. Tan,  
CTPCLC Lecturer



Charmaine Song Xinling  
School of Business, 2024

Charmaine is a final-year Business student here at NUS, majoring in Operations & Supply Chain with a minor in Community Development & Leadership. "To live loved and to live loving" is an important principle that defines her life's purpose. She also believes that it is her calling to serve the youths in her Church's community. Whenever time permits, she enjoys going on hikes and long walks, enjoying the beauty of God's creations in our world.



Tong Hui Yi  
Faculty of Arts & Social Sciences, 2024

Hui Yi is a final-year student in NUS, majoring in Social Work and Sociology. With a strong interest in social issues and how they impact people on the ground, she enjoys doing research to better understand people and their lived experiences through their lens. Grateful to be growing her knowledge and expertise through her academic course and via multiple internships in the social service sector, she seeks to consider how we may best uplift the vulnerable and empower service-users in Singapore. In her free time, she loves to spend time with her loved ones and bask in nature.

# PANEL DISCUSSION: CHALLENGES OF AN AGEING POPULATION IN SINGAPORE

## Moderator



**Ms Sim Rou Chen**  
Chief Operations Officer  
WeHiro

Ms Sim Rou Chen oversees the planning and execution of WeHiro's experiential simulation programmes, and currently leads the marketing arm of the social enterprise. Her efforts concentrate towards WeHiro's goals of increasing people's awareness of social issues, cultivating empathy towards communities, and inspiring action.

Aside from her work at WeHiro, Rou Chen has also been involved in over 7 years of voluntary service with seniors and low income families. That experience led her to pursue a Bachelor of Social Science in Social Work and Psychology from the National University of Singapore, and to enroll in the Chua Tian Poh Community Leadership Centre for a deeper dive into community.

## Panellist



**Mr Chern Siang Jye**  
Group Chief, Sector &  
Partnerships Division  
Agency for Integrated Care

Mr Chern Siang Jye oversees AIC's engagement efforts with partners in the Community Care sector. AIC supports the Community Care sector to be ready for the growing and evolving needs of our population and creates networks and partnerships to enable Seniors to live well and age gracefully. At AIC, Siang Jye previously oversaw strategy and corporate functions, sector leadership development, grant making and research and data.

Prior to AIC, Siang Jye led the Strategy and Infrastructure Planning functions within the Ministry of Health. He also led the Strategic Planning division, oversaw Singapore's Intellectual Property policy development and drove projects to improve access to legal aid and insolvency schemes at the Singapore Ministry of Law.

He started his career at the Singapore Economic Development Board where he worked on Government-Government projects.

## Panellist



**A/Prof (Dr) Kenny Tan**

Chief Executive Officer  
St Luke's ElderCare Ltd

Associate Professor (Dr) Kenny Tan was appointed Chief Executive Officer of St Luke's ElderCare Ltd (SLEC) in August 2016. He was previously the Chief Operating Officer for both St Luke's Hospital and St Luke's ElderCare Ltd from 2013 to 2016.

He is also an Adjunct lecturer for the Master of Science in Applied Gerontology program at the Lee Kong Chian School of Medicine, Nanyang Technological University and an Associate Professor in the Health and Social Sciences Cluster at the Singapore Institute of Technology. His research and teaching areas are in healthcare services, health systems and policy, integrated care, gerontology, leadership and management.

He was awarded the Healthcare Humanity Award in 2017, the Ageing Asia Global Ageing Trailblazer Award in 2019, and Ageing Asia Global Ageing Influencer Award in 2021. For his contribution to manage the impact of COVID-19 in Singapore, he was awarded The Public Service Medal (COVID-19) in 2023.

## Panellist



**A/Prof Thang Leng Leng**

Department of Japanese Studies,  
Co-Director of the Next Age  
Institute, Faculty of Arts and  
Social Sciences, NUS

Dr Thang Leng Leng is Associate Professor of Department of Japanese Studies, also Co-Director of the Next Age Institute, Faculty of Arts and Social Sciences, National University of Singapore. She is also co-lead of the workstream on purposeful longevity of the Health District @ Queenstown initiative. She obtained PhD (Anthropology) from the University of Illinois at Urbana-Champaign, and is a socio-cultural anthropologist with research interests in ageing, intergenerational approaches and relationships, family and migration with a focus on Asia, especially Japan and Singapore. She publishes widely in her areas of expertise and specializes in ethnographic and qualitative research approaches.

She is active in community services, currently serving on Management Boards of Fei Yue Family Service as President, and Presbyterian Community Services as Vice President. She is also President of Singapore Gerontological Society and Treasurer of Population Association of Singapore.

# EXPERIENTIAL DEMOS BY CTPCLC ALUMNI

## AI & Technology to Engage Seniors



**Willoughby Niki Lee**, co-founder of VolunteerSG Heartbeats will showcase two digital activities focused on seniors' wellbeing:

- (1) **'BoomBox'** – an artificial intelligence-based gamified stretching and dance activities personalised to engage seniors in collaborative exercise in their comfort.
- (2) **'TinkerBot'** - a tactile remote-controlled car game for seniors to control wirelessly with a hand controller to navigate obstacle courses.

## Step into the Shoes of Seniors



**Sim Rou Chen**, Chief Operations Officer of WeHiro will showcase equipment used for flagship **Ageing Simulation Programme**, allowing individuals to experience the physical (and thereafter, social and emotional) challenges that seniors might face in their day-to-day lives.

## Event Emcee



### **Ms Cheong Ming Fang**

Social Worker, South Central  
Community Family Service Centre

Ms Cheong Ming Fang is a Social Worker committed to supporting underserved communities. With a focus on addressing social inequalities, she works closely with individuals facing poverty in rental neighbourhoods, providing invaluable assistance in navigating their intricate financial, social, and emotional challenges.

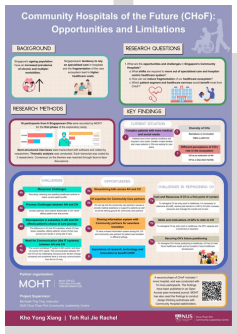
Driven by her passion for human stories and the transformative potential of collective action, she also dedicates her time to serving as a Grassroots Leader in her local neighbourhood. There, she actively fosters connections and champions positive change as a young community organiser, drawing from her learnings during her time with CTPCLC.



# POSTER DISPLAY

## Community Hospitals of the Future (CHoF): Opportunities & Limitations

by \**Kho Yong Xiang & \*Rachel Toh Rui Jie*



How will Singapore's Community Hospitals look like in the future? Working in collaboration with the MOH Office for Healthcare Transformation, this qualitative exploratory study aims to investigate the opportunities and challenges in Singapore's Community Hospitals amidst an ageing population with complex needs. These include identifying potential roles that future Community Hospitals can fulfil, and reviewing the pain points of current regulatory and financing policies.

Partner Organisation:

Ministry of Health Office for Healthcare Transformation

Project Supervisor:

Ms Kuah Ting Ting, CTPCLC Instructor

## Reimagining the Active Ageing Centres of Thye Hua Kwan

by \**Charmaine Song Xinling and \*Tong Hui Yi*



This exploratory study aims to uncover the expectations and hopes of Ang Mo Kio senior residents in Singapore regarding new Active Ageing Centres (AACs) in their neighbourhood.

Partner Organisation:

Thye Hua Kwan Moral Charities Limited

Project Supervisor:

Dr Kevin S.Y. Tan, CTPCLC Lecturer

# POSTER DISPLAY



## Understanding the Expectations and Perceptions of Home-based Assisted Living Services among Elderly Singaporeans

by *\*Myat Thu Kyaw, Sattur Sanaya Milind & \*Tan Peng Ying Isabelle*

This study aims to understand the target profile user perceptions and expectations of home-based assisted living services. The findings reflected that elderly's expectations and perceptions of home-based assisted living services included maintaining autonomy and independence during the aging process, ensuring personal growth while aging, having financial agency, acknowledging different social needs, and room to recognize one's personal health.

Partner Organisation:  
*Asia Philanthropy Circle (APC)*

Project Supervisor:  
*Dr Satveer Kaur, CTPCLC Instructor*



## Building a Dementia-Friendly Community in Kebun Baru

by *\*Jazreel Low Ju Li, Jocelyn Joy Gwee, Lau Wan Ling & Tan Jiayi*

This is a ground-sensing study in Kebun Baru as part of Alzheimer's Disease Association's efforts to use an asset-based approach to build an inclusive dementia friendly community. Findings from the study enabled Alzheimer's Disease Association to identify and implement interventions that helped create an inclusive dementia friendly community in Kebun Baru by increasing dementia awareness, improving wayfinding, and enabling community through informal activities.

Partner Organisation:  
*Alzheimer's Disease Association (currently known as Dementia Singapore)*

Project Supervisor:  
*Dr Angeline Lim, CTPCLC Lecturer*

# POSTER DISPLAY

## Attitudes and Perceptions toward Healthcare Technology Adoption among Older Adults in Singapore

by \*Pradnya Govind & Low Tze Hui Sarah

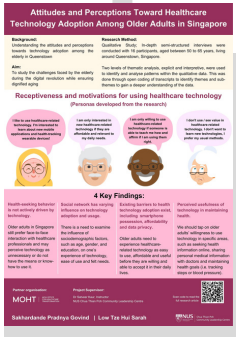
This is a study on the challenges faced to adapt the elderly for the digital revolution while ensuring dignified aging. While the healthcare industry accelerates its study and use of health technologies to improve diagnostics, treatment, and the quality of life of those in the ageing category, the elderly socially construct these technological insertions that challenge the dominant understandings of what these technologies can do for their health outcomes. The study reveals re-constructions of these technological insertions through the voice of the elderly in their negotiations with health technologies in their everyday lives.

Partner Organisation:

Ministry of Health Office for Healthcare Transformation

Project Supervisor:

Dr Satveer Kaur, CTPLC Instructor



## Assisted Living Facilities (ALFs)

by \*Lim Yan Xuan, Koo Jing Yuan Ischelle & Loon Kin Yip Brendan

This is a qualitative study that examines the perceptions and expectations of independent living among residents within communal rental models. The findings from the study highlight the viability of a communal living model as an alternate resource in supporting the diverse needs of our ageing population.

Partner Organisation:

Asia Philanthropy Circle (APC)

Project Supervisor:

Dr Satveer Kaur, CTPLC Instructor



**The Chua Thian Poh Community Leadership  
Centre would like to take this opportunity to  
thank:**

**Senior Minister of State, Mr Tan Kiat How**  
for his participation as Guest-of-honour in our  
symposium

**and**

**Dr Chua Thian Poh and Ms Chua Weiling**  
for their generous support in enabling our students to  
pursue their interest in Community Development

**and special thanks to**

**Our organisational partners, NUS staff &  
students, CTPCLC alumni & students, and all  
the participants**  
for your support.

**Chua Thian Poh Community Leadership Centre**

NUS University Town, 1 Create Way, CREATE Tower  
#02-05, Singapore 138602

T: +65-6601 7513

E: [ctpclc@nus.edu.sg](mailto:ctpclc@nus.edu.sg)

W: [ctpclc.nus.edu.sg](http://ctpclc.nus.edu.sg)

